



Best Specialty Product -

BRIEF EXPLANATION:

After ten years of contemplating how to create an elegant entry to this magnificent home, the Homeowner and Architect collaborated on how to redesign this entry. The existing entrance had no curb appeal and it was difficult to distinguish where the front door was located. The balance of this home was complete, but the entry and front Office facade needed some “Pizzazz.”

CHALLENGES:

After years of studying and designing this front entrance, the Homeowner hired an architect with whom he has completed many projects. With another set of eyes and thinking “outside the box,” the challenges of this project did not diminish. First of all, the front entrance was very dated, and the stone veneer and siding were no longer available. The front entrance had no cover to help protect the invited guests from ominous weather and the western sun was creating an abundance of heat into the two story Foyer with its expansive glass. This area of the house near the front entry required a much needed redesign.

CREATIVE SOLUTIONS:

Upon extensive research, the Homeowner found an aluminum extruded siding called “Longboard” in red cedar to create the “WOW” factor for this entrance. The architect solved the other challenges by creating a Front Porch shed roof ingeniously designed to incorporate into the two existing roofs and created protection from the western sun. The window glass dimensions were resized to be shorter but wider to incorporate three windows in lieu of two. A bay window, matching the front Dining Room, was added to the front Office facade and, with the new stone and Azek corners in lieu of the discontinued quoins, the front entrance created the desired look. Along with the use of the red cedar metal siding, the accent was just enough to create one’s attention to the front entry which also created that curb appeal.

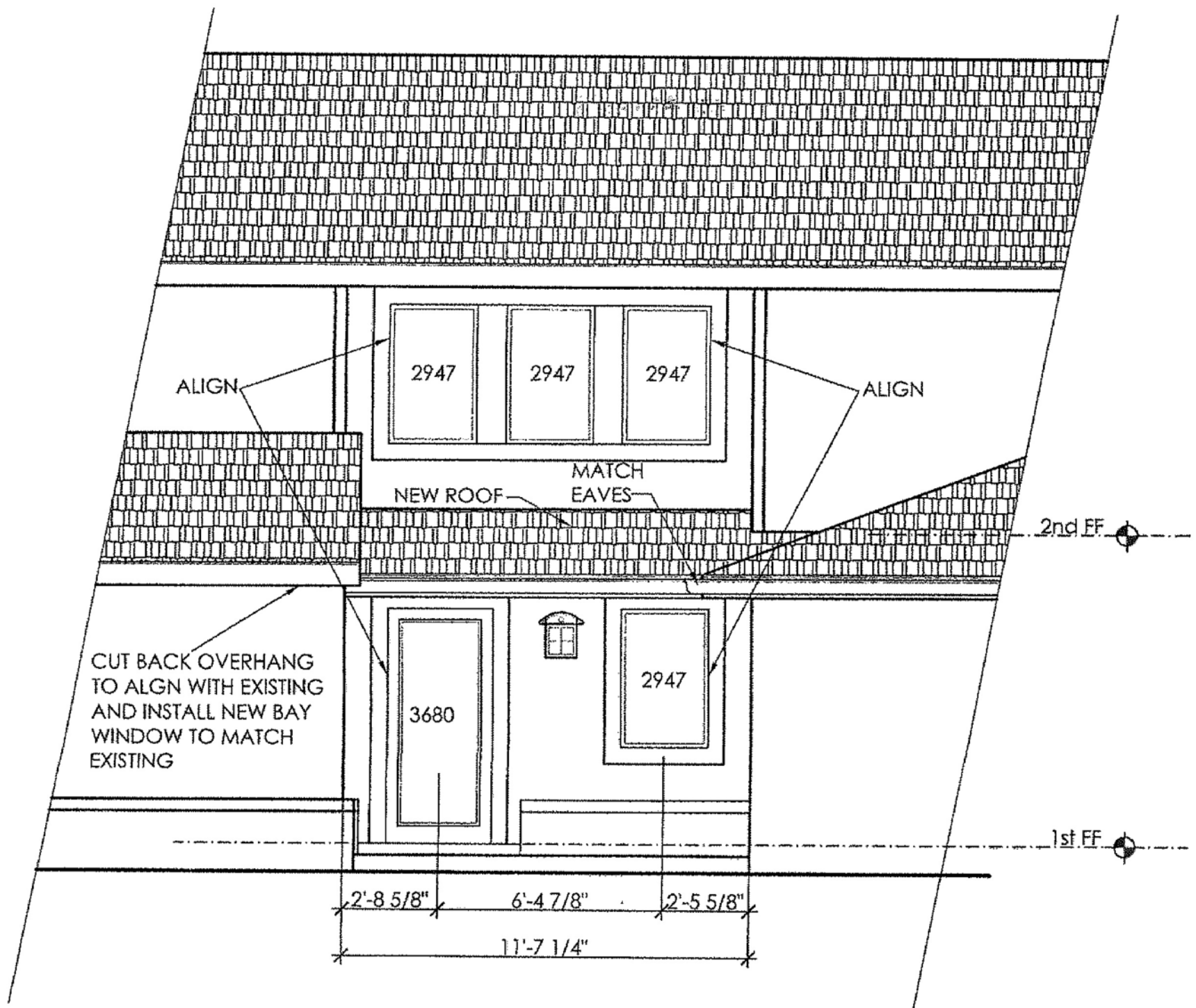
RESULTS:

The final results seem like it was a no brainer to create but the Homeowner and architect remembered the struggles. The exterior of this home is complete, utilizing all green materials and creating an “inviting entrance into this home” which looked like it should have been incorporated originally. The new redesigned front facade achieved **“For A Home You Will Love”**

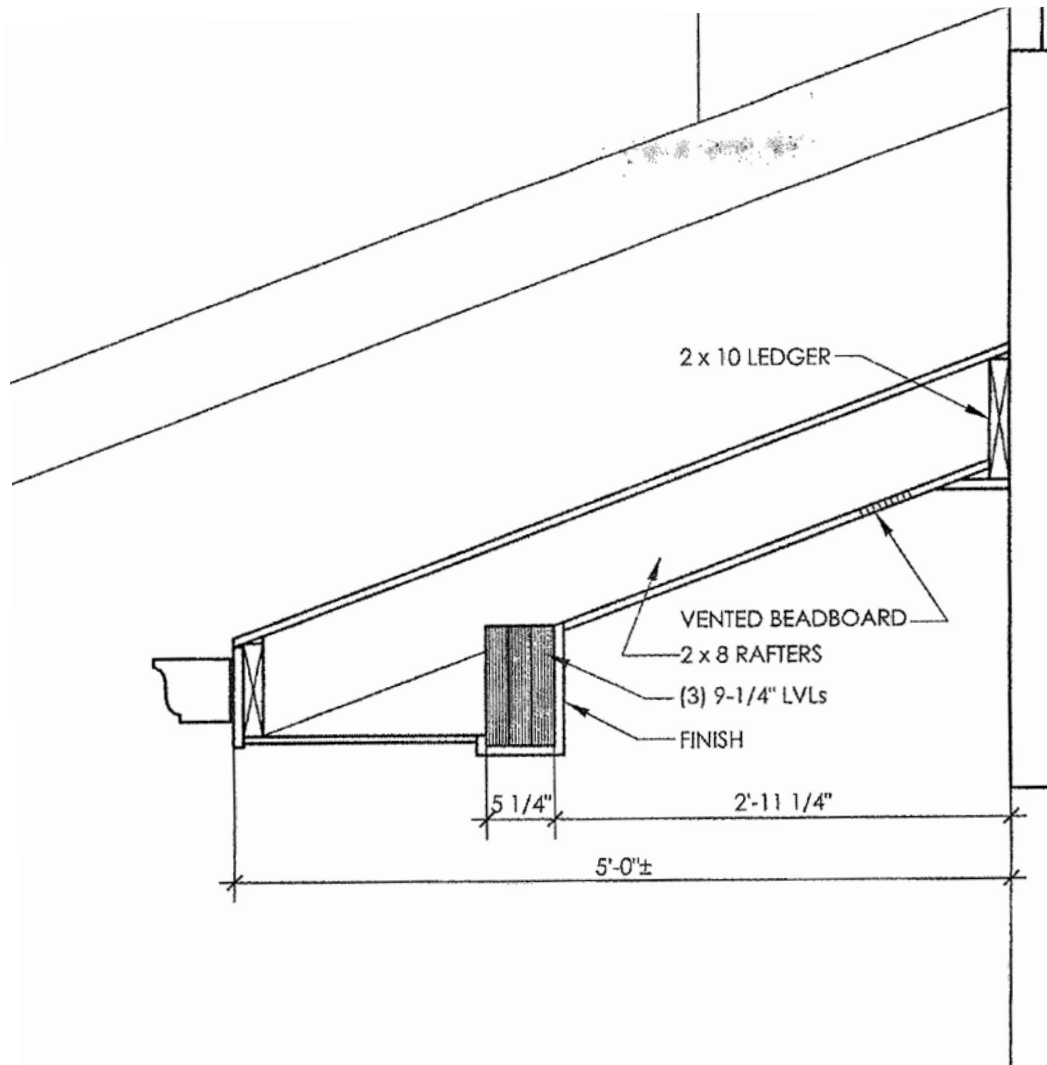


EA Makoski Construction Company Inc.
P.O. Box 546 Cleveland, Ohio 44105 440.722.7558 Fax 440.722.7559
Email: info@eamakoski.com Website: www.eamakoski.com

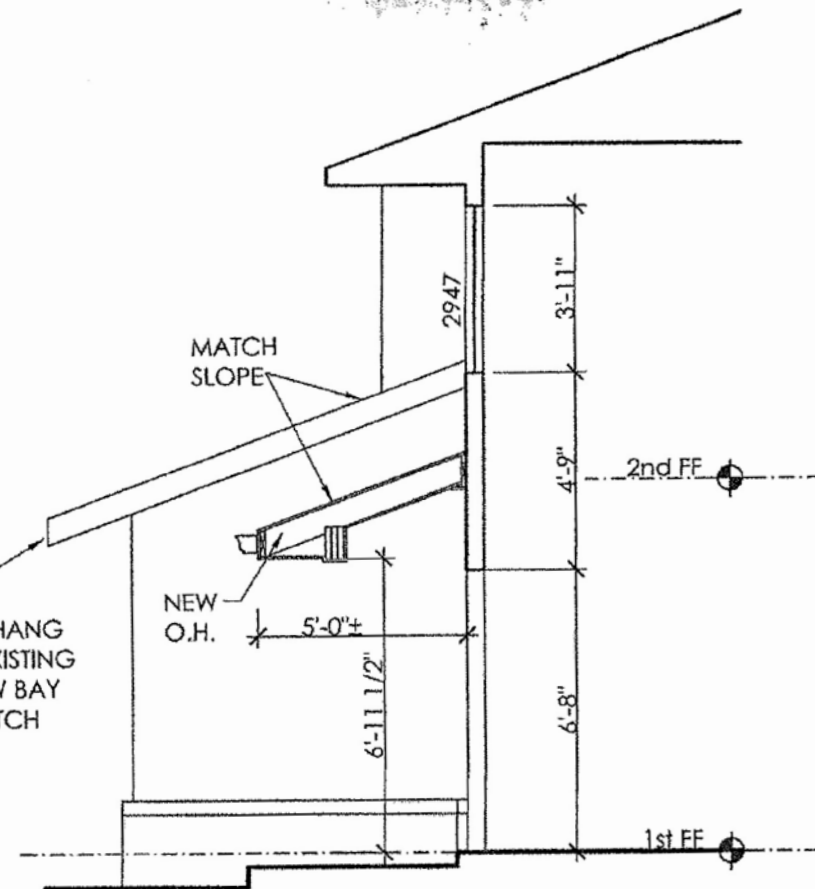




New Entrance Elevation



CUT BACK OVERHANG
TO ALGN WITH EXISTING
AND INSTALL NEW BAY
WINDOW TO MATCH
EXISTING



Plans Details

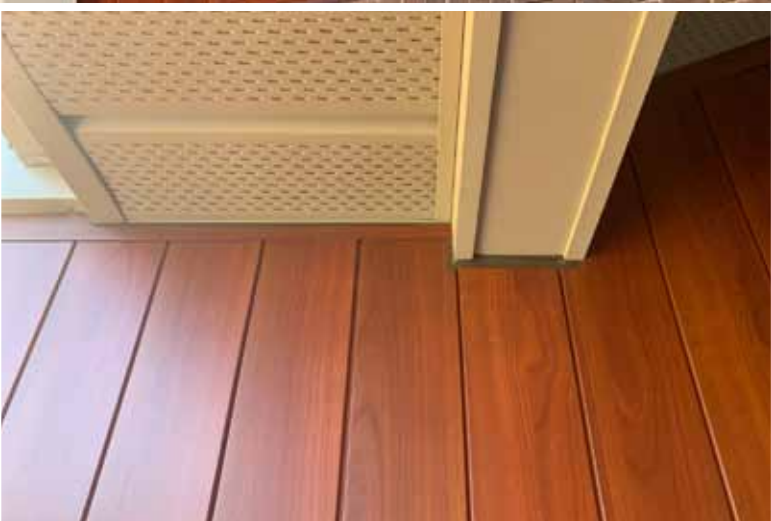


After



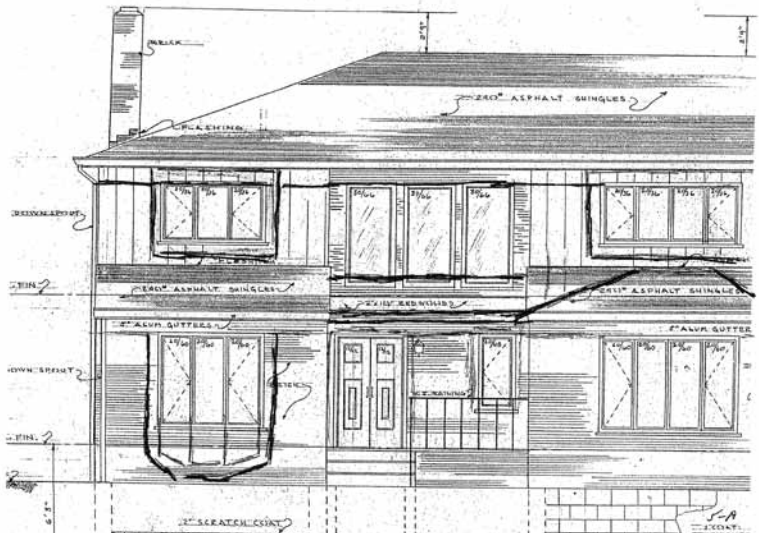
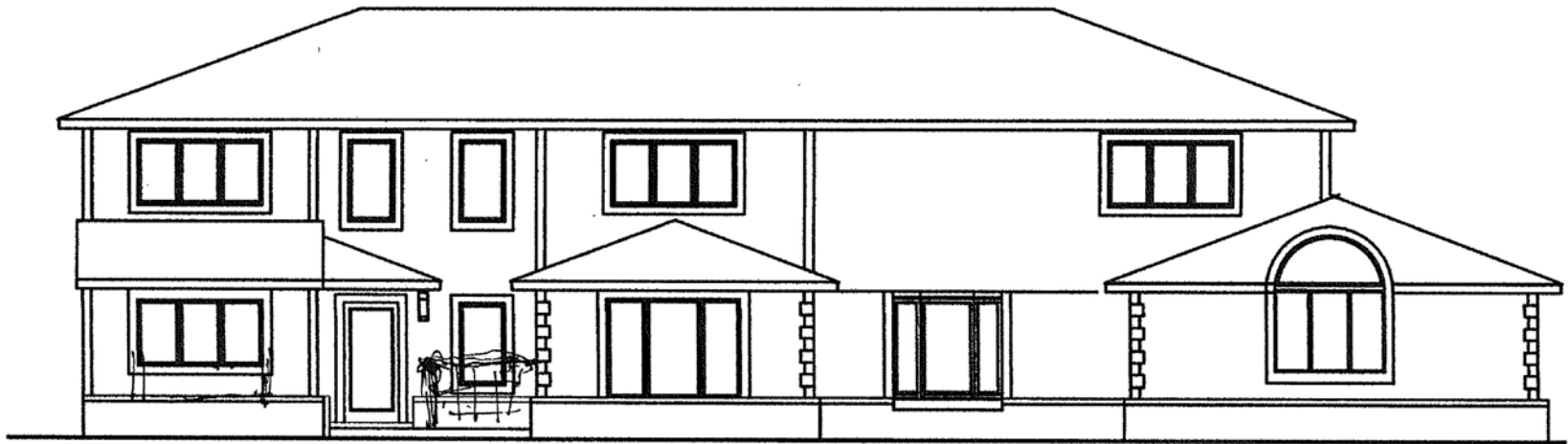
Before

The front entrance had an unappealing original design and no consideration was given to the brutal western sun during the warm months.



Extruded Aluminum “Long Board” Siding in Red Cedar

The use of this aluminum extruded siding is usually used on commercial projects but it gave the front entry the “Pizzazz” it required. The architectural metal installers fabricated every detail and had a solution for any problem that arose.



Design Ideas

It is a very difficult architectural project to create a "WOW" factor for the front entrance with only blending into the existing without a complete renovation.



Window Placement

The architectural design for the windows was critical. The bay window in the front Office facade balanced the house and the Foyer upper windows matched the existing windows. The upper Foyer window sizes were critical to add the shed roof for weather protection and shade but allowed adequate flashing below the windows for the NE Ohio climate.





Roof Lines

The architect ingeniously matched the existing roof lines and even had the new fascia which holds the gutter in perfect alignment.





Office Bay Window

The bay window in the front Office facade added to the architectural appeal and balanced off the house nicely since an identical one was in the Dining Room front facade.



Before

After

The bay window and stone could not be accomplished without reducing the overhang to match the rest of the house. The transformation was incredible.



Interior

The inside photo reveals the length of the original windows which now allows a space for the shed roof and creates shelter and shade. The new window left of the door could not be placed as per the blueprint since it would not align properly with the interior stairway from the interior view.



Featured Front Entrance

The attention to detail, the red cedar aluminum siding, the use of stone and vinyl shake shingles along with the craftsmanship of the aluminum brake work created the front entrance "WOW" factor.





After

The use of vinyl shake siding and aluminum brake work matches the existing and adds to the appeal of this home. The bay window in the Office front facade along with the side triple window makes this Office very bright and airy.



Driveway View

The new curb appeal is fantastic and the main entry with its red cedar siding identifies from any distance the front entrance.



"For A Home You Will Love"